



- Low Cost Ceramic Range
- Available in 5 colours (Bianco, Charcoal, Grigio, Ivory, Mist)
- 3 sizes (300x300, 300x400, 400x400)
- Floor and Wall
- 2 finishes (Gloss and Matt)



Bianco
STFC40X401331



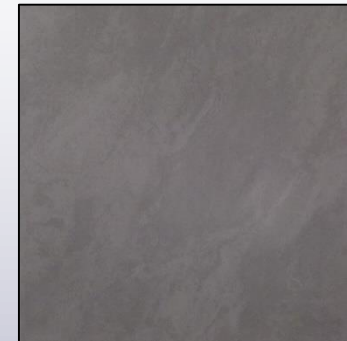
Ivory
STFC40X401337



Mist
STFC40X401339



Grigio
STFC40X401335



Charcoal
STFC40X401333

Size	Finish	Application	M2 per Tile	PCS per Box	M2 per Box	Boxes per PLT	M2 per PLT	KG per CTN	KG per PLT
300x300	Matt	Floor	0.09	15	1.35	78	105.3	20.2	1575.6
300x400	Gloss	Wall	0.12	10	1.2	48	57.6	23.6	1132.8
400x400	Matt and Gloss	Floor	0.16	7	1.12	64	71.68	19.4	1241.6

- Mist not available in Gloss 400x400